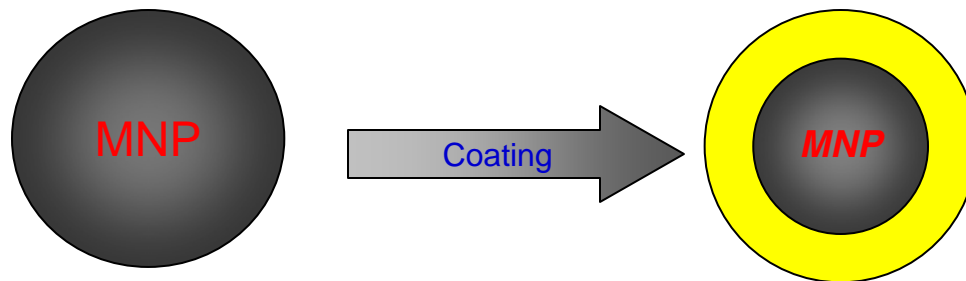


# Thermal stability and magnetotransport in core-shell nanostructures

Tianlong Wen

Materials Science & Engineering  
May 22, 2007



*Stability*

*Functionalization*

*biocompatibility*

*Coupling  
various  
properties*



(1) Influence of surface energy and interfacial energy on the stability of core-shell nanostructure

(2) Magnetotransport behaviors in assembly of magnetic core-shell nanostructures



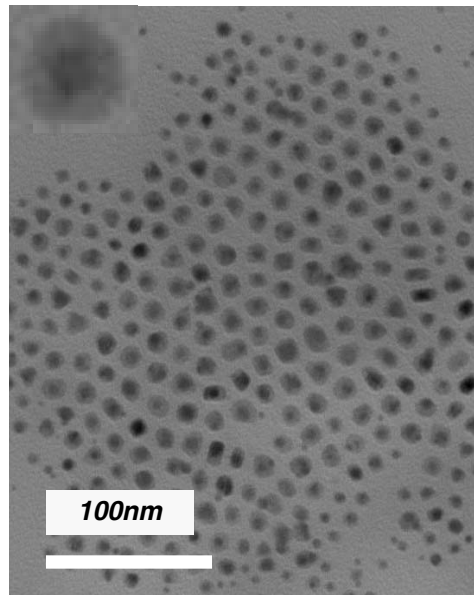
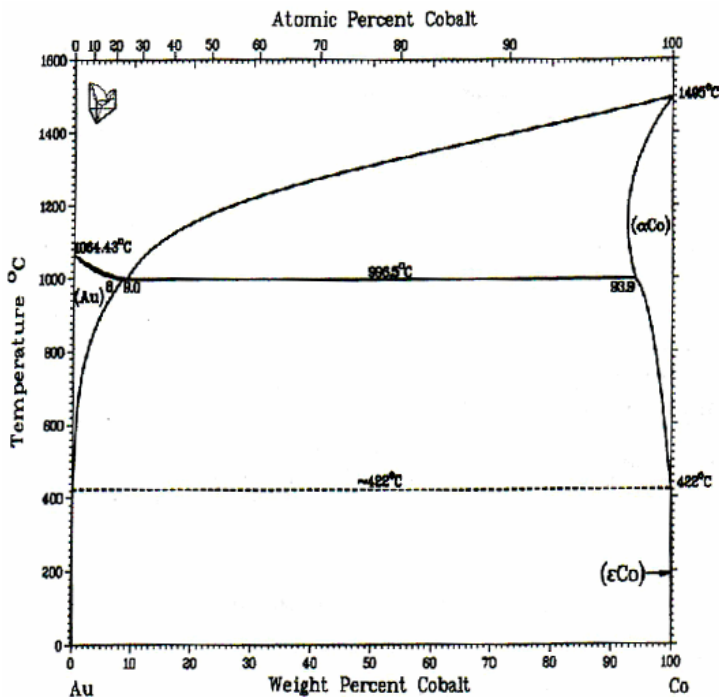
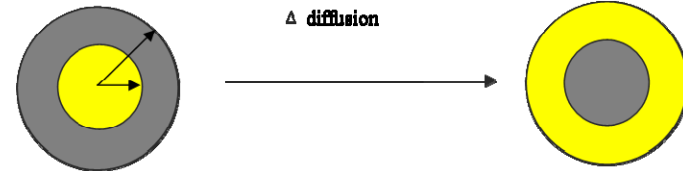
THE CENTER FOR  
NANOTECHNOLOGY

UNIVERSITY OF  
WASHINGTON

# Thermal stability and magnetotransport in core-shell nanostructures

Element	$T_m$ (K)	$\gamma$ (298.2K)/Jm <sup>-2</sup>	$\gamma$ ( $T_m$ )/Jm <sup>-2</sup>
Au	904	1.626	1.345
Co	1768	2.709	2.003
Interfacial Au/Co		0.204J/m <sup>2</sup>	

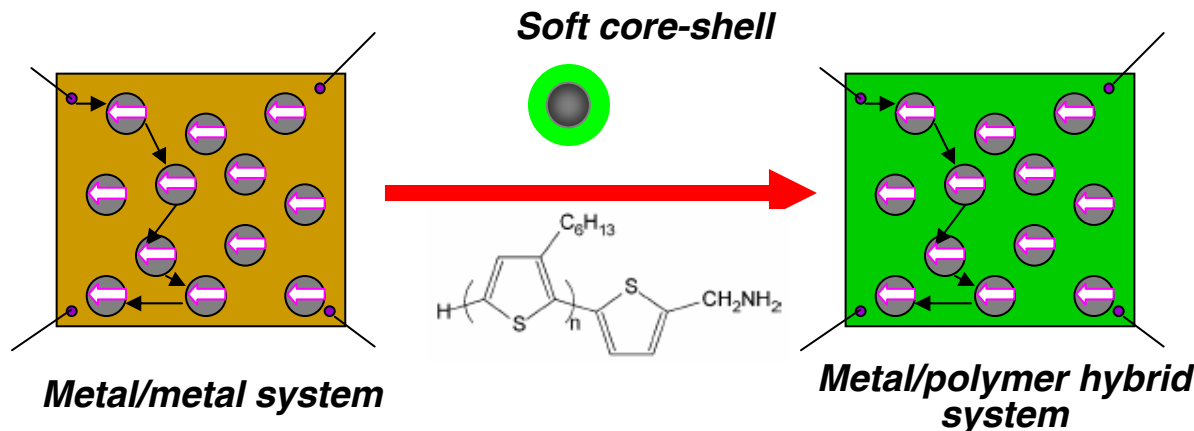
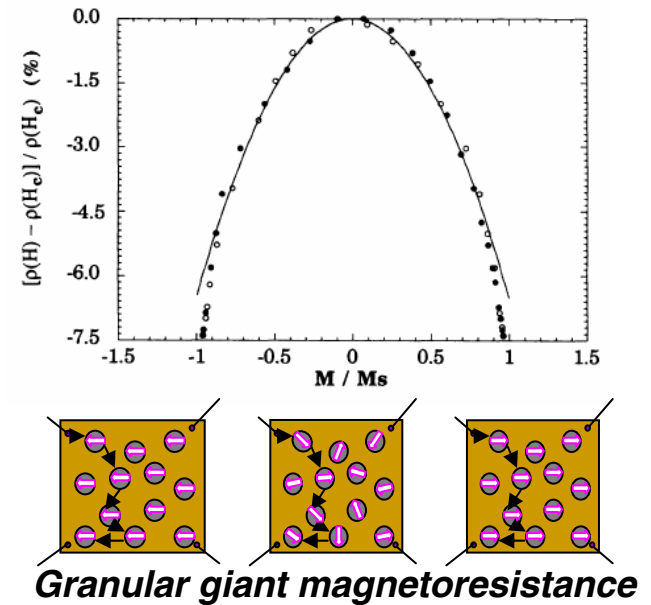
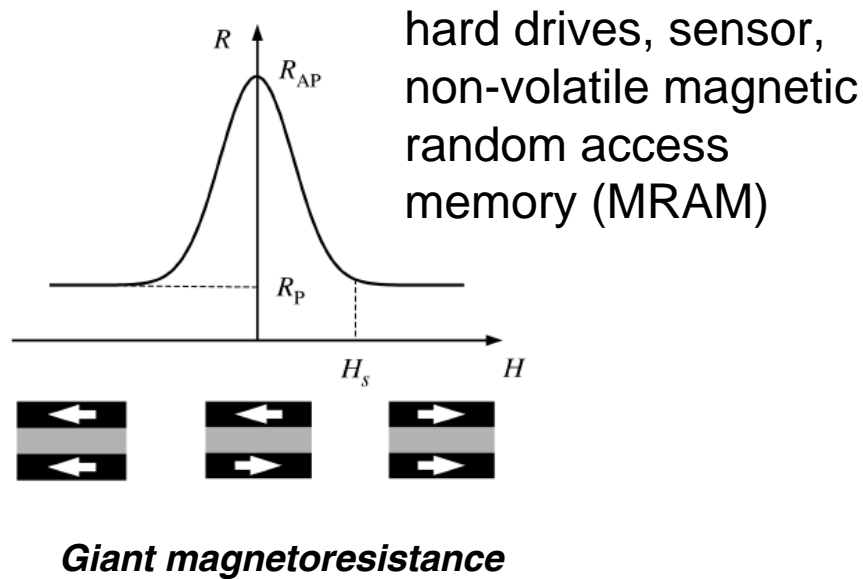
*Hard core-shell*



THE CENTER FOR  
NANOTECHNOLOGY

UNIVERSITY OF  
WASHINGTON

# Thermal stability and magnetotransport in core-shell nanostructures



THE CENTER FOR  
NANOTECHNOLOGY

UNIVERSITY OF  
WASHINGTON